

WOLF PRESERVE



PECONIC LAND TRUST

Conserving Long Island's working farms, natural lands, and heritage for our communities now and in the future.



LEGEND



LOOKOUTS



PARKING



INFORMATIONAL SIGNAGE



KIOSK

REESE PRESERVE

WOLF PRESERVE

EXISTING TRAILS

PROPOSED TRAILS

To provide the community with a place to breathe and connect with nature is what Mrs. Leonor D. Wolf hoped for when she donated the Wolf Preserve to the Peconic Land Trust in 2003.

The preserve's 23 acres today provide that connection to the community. The two nature trails winding through the property were opened to the public in 2006.

In the Fall of 2020, the 1/3 mile Eastern Trail Loop was renovated and:

- widened to six feet to accommodate wheelchairs
- leveled to maintain an approximate grade of 0-3%
- expanded to include experiences of scenic vistas and unique habitats
- improved with woven textile fabric to extend the trail's lifespan, and
- stabilized with a natural stone blend to harden the surface.

The design of the Eastern Trail Loop's meandering path is more than just beautiful. It will help prevent washouts during storms. Wind your way through a mature woodland featuring oak and beech trees, with great wetland habitat for both migrating birds and waterfowl.

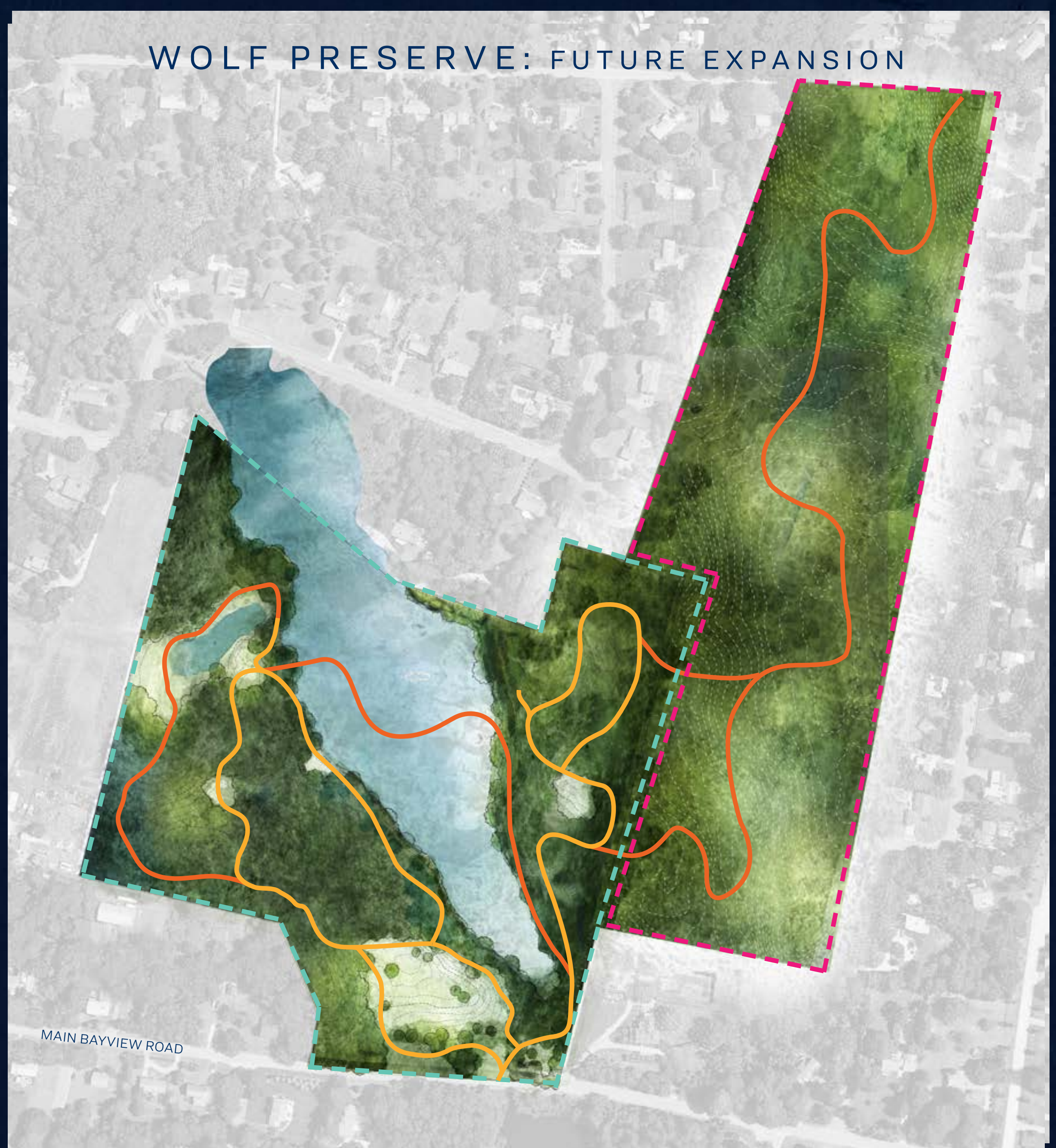
The 1/2 mile Western Trail Loop takes you through the meadow and into the dense red cedars of the regenerating woodland. While this part of the property had been farmed for many years, Mrs. Wolf allowed it to revert to its natural state to provide wildlife habitat. Wander along the wetlands, and keep your eyes open for waterfowl, reptiles, and amphibians.

The eco-friendly updates used in the Eastern Trail Loop were used again when the Western Trail Loop and the Meadow Loop were renovated in the Fall of 2021. Future trail enhancements include a boardwalk across the wetlands, a bridge to connect the Eastern and Western Trail Loops, and an expanded parking lot.

The Trust's Harold A. Reese Preserve, acquired in 2020, borders the Wolf Preserve to the southeast and expands the conserved area on the Great Hog Neck peninsula by 30 acres. We're creating another trail with accessible features to link the two preserves. To be completed in 2022, this trail will run from Main Bayview Road to North Bayview Road, showcasing several important ecosystems and the native species who live there.

While visiting the Wolf Preserve trails, be sure to look for signs along the way with information about the wildlife and plant habitats found within the preserves. Be a part of this great project and help us improve accessibility on our preserves! Fundraising to improve the trail system at the Wolf and Reese Preserves is ongoing. To find out more, please visit www.PeconicLandTrust.org/WolfPreserve or call 631.283.3195. Your support makes these trails possible. Thank you!

WOLF PRESERVE: FUTURE EXPANSION



The Wolf Preserve is one of many nature preserves of the Peconic Land Trust. To find more places to explore on Long Island, visit us online at www.PeconicLandTrust.org

Para obtener una versión en español, favor de visitar nuestro sitio web en www.PeconicLandTrust.org/WolfEnEspanol

